



FACILITY STUDY

for

Generation Interconnect Request GEN-2023-038

200MW Solar Generating Facility

Coal County

Oklahoma

January 6, 2026

Rhiannon Hensley

Senior Engineer

Transmission Planning

OG&E Electric Services

Summary

Pursuant to the tariff and at the request of the Southwest Power Pool (SPP), Oklahoma Gas and Electric (OG&E) performed the following Facility Study to satisfy the Facility Study Agreement executed by the requesting customer for SPP Generation Interconnection request GEN-2023-038. The request for interconnection was placed with SPP in accordance with SPP's Open Access Transmission Tariff, which covers new generation interconnections on SPP's transmission system. The requirements for interconnection consist of reconfiguring the substation to a ring bus, installing a new 138kV terminal, metering, and associated equipment at Lula Substation. Network upgrades at Lula Substation consist of installing switches, breakers, and associated equipment. The total cost of OKGE is estimated at **\$6,225,155**.

Table of Contents

Table of Contents	3
Introduction	4
Interconnection Facilities	5
Interconnection Costs	6
One-Line diagram of Interconnection	7

Introduction

The Southwest Power Pool has requested a Facility Study for the purpose of interconnecting a solar generating facility within the service territory of OG&E Electric Services (OKGE) in Coal County, Oklahoma. The proposed 138kV point of interconnection is at Lula Substation in Coal County. This substation is owned by OKGE. The cost for reconfiguring the substation, installing a new 138kV terminal, one breaker, switches, and other associated equipment, is estimated at **\$6,225,155**.

Other Network Constraints in the American Electric Power West (AEPW), Southwest Public Service (SPS), OKGE and Western Farmers Electric Cooperative (WFEC) systems may be verified with a transmission service request and associated studies.

Interconnection Facilities

The primary objective of this study is to identify attachment facilities. The requirements for interconnection consist of installing a new 138kV terminal and associated metering equipment at Lula Substation. Network upgrades consisting of substation reconfiguration, installing a new breaker, switches, and associated equipment are also required for interconnection. This 138kV upgrade shall be constructed and maintained by OKGE. It is assumed that obtaining all necessary right-of-way for the line to the existing OKGE Lula 138kV substation will be performed by the interconnection customer.

The total cost for OKGE to add a new 138kV terminal and network upgrades at Lula substation is estimated at **\$6,225,155**. This cost does not include the building of the 138kV line from the customer substation to the dead-end structure at Lula substation. This does not include the Customer's 138-34.5kV substation and the cost estimate should be determined by the Customer.

This Facility Study does not guarantee the availability of transmission service necessary to deliver the additional generation to any specific point inside or outside the Southwest Power Pool (SPP) transmission system. The transmission network facilities may not be adequate to deliver the additional generation output to the transmission system. If the customer requests firm transmission service under the SPP Open Access Transmission Tariff at a future date, Network Upgrades or other new construction may be required to provide the service requested under the SPP OATT.

The costs of interconnecting the facility to the OKGE transmission system are listed in Table 1.

Short Circuit Fault Duty Evaluation

It is standard practice for OG&E to recommend replacing a circuit breaker when the current through the breaker for a fault exceeds 100% of its interrupting rating with re-closer de-rating applied, as determined by the ANSI/IEEE C37.5-1979, C37.010-1979 & C37.04-1979 breaker rating methods.

For this generator interconnection, no breakers were found to exceed their interrupting capability after the addition of the Customer’s 200 MW generation and related facilities. OG&E found no breakers that exceeded their interrupting capabilities on their system. Therefore, there is no short circuit upgrade costs associated with the GEN-2023-038 interconnection.

Table 1: Required Interconnection Network Upgrade Facilities

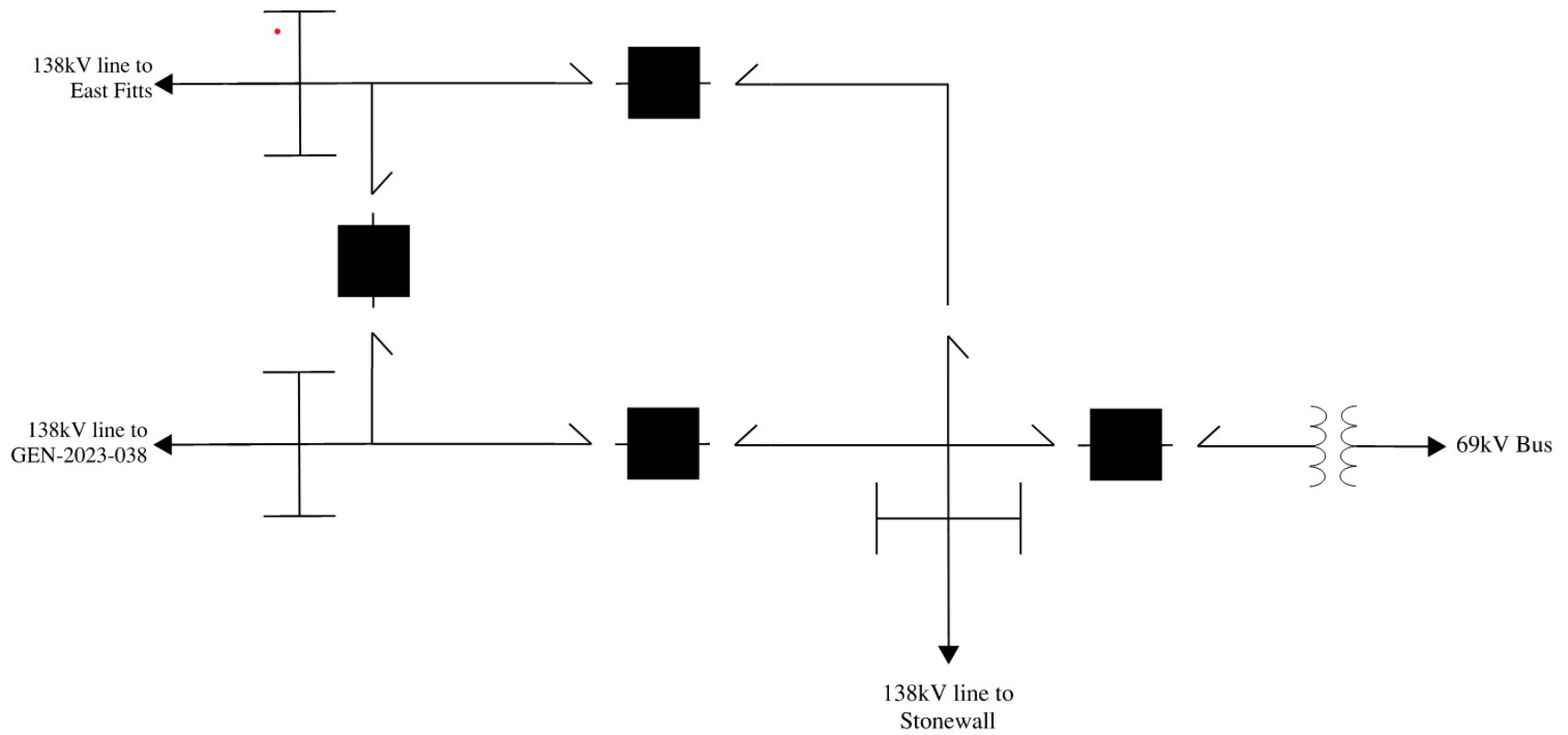
Facility	ESTIMATED COST (2025 DOLLARS)
Lead time	36 Months
OKGE – Interconnection Facilities (UID 158744) - New 138kV terminal, metering equipment consisting of CT/PTs, and associated equipment	\$2,513,699
OKGE – Network Upgrades (UID 158077) - Reconfigure substation to ring bus, Install one 138kV Breaker, Switches, and associated equipment	\$3,711,456
OKGE – Land or ROW	\$0
Total	\$6,225,155

Prepared by Rhiannon Hensley
Senior Engineer, Transmission Planning
OG&E Electric Services

January 6, 2026

Reviewed by:
Adam Snapp, P.E.
Senior Manager, Transmission Planning

Lula Substation





FACILITY STUDY

for

DISIS-2023-001 Network Upgrade Request UID: 171462

Reconfigure Lines at Lula 138kV Substation

Coal County

Oklahoma

January 6, 2026

Rhiannon Hensley
Senior Engineer
Transmission Planning
OG&E Electric Services

Summary

Pursuant to the tariff and at the request of the Southwest Power Pool (SPP), Oklahoma Gas and Electric (OG&E) performed the following Facility Study to satisfy the Facility Study Agreement executed by the requesting customer for SPP DISIS-2023-001 UID 171462. The request for interconnection was placed with SPP in accordance with SPP's Open Access Transmission Tariff. The requirements for network upgrade of reconfiguring the line positions at Lula 138kV substation to be established by UID 171462. The total cost of OKGE is estimated at **\$1,877,203**.

Table of Contents

Table of Contents	3
Introduction	4
Interconnection Facilities	5
Interconnection Costs	6
One-Line diagram of Interconnection	7

Introduction

The Southwest Power Pool has requested a Facility Study for the purpose of reconfiguring the transmission line terminals at Lula 138kV substation within the service territory of OG&E Electric Services (OKGE) in Coal County, Oklahoma. This substation is owned by OKGE. The cost for reconfiguring the line terminals is estimated at **\$1,877,203**.

Other Network Constraints in the American Electric Power West (AEPW), Southwest Public Service (SPS), OKGE and Western Farmers Electric Cooperative (WFEC) systems may be verified with a transmission service request and associated studies.

Interconnection Facilities

The primary objective of this study is to identify attachment facilities. The requirements for reconfiguring the line terminals at Lula substation consists of moving the Stonewall terminal to the new position created by GEN-2023-038, and replacing the existing position with GEN-2023-038. This 138kV upgrade shall be constructed and maintained by OKGE.

The total cost for OKGE to reconfigure the line terminals at Lula substation is estimated at **\$1,877,203**.

This Facility Study does not guarantee the availability of transmission service necessary to deliver the additional generation to any specific point inside or outside the Southwest Power Pool (SPP) transmission system. The transmission network facilities may not be adequate to deliver the additional generation output to the transmission system. If the customer requests firm transmission service under the SPP Open Access Transmission Tariff at a future date, Network Upgrades or other new construction may be required to provide the service requested under the SPP OATT.

The costs of interconnecting the facility to the OKGE transmission system are listed in Table 1.

Short Circuit Fault Duty Evaluation

It is standard practice for OG&E to recommend replacing a circuit breaker when the current through the breaker for a fault exceeds 100% of its interrupting rating with re-closer de-rating applied, as determined by the ANSI/IEEE C37.5-1979, C37.010-1979 & C37.04-1979 breaker rating methods.

For this network upgrade, no breakers were found to exceed their interrupting capability after the reconfiguration of related facilities. OG&E found no breakers that exceeded their interrupting capabilities on their system. Therefore, there is no short circuit upgrade costs associated with the UID 171462 interconnection.

Table 1: Required Interconnection Network Upgrade Facilities

Facility	ESTIMATED COST (2026 DOLLARS)
Lead time	36 Months
OKGE – Interconnection Facilities	\$0
OKGE – Network Upgrades- Reconfigure Line Terminals are Lula 138kV Substation	\$1,877,203
OKGE – Land or ROW	\$0
Total	\$1,877,203

Prepared by Rhiannon Hensley
Senior Engineer, Transmission Planning
OG&E Electric Services

January 6, 2026

Reviewed by:
Adam Snapp, P.E.
Senior Manager, Transmission Planning

Lula Substation

